



## HX(\*).406/2800 Injection Molding Machines

### Parameter

Model: Hx(*).406/2800 Injection Molding Machines					
Technical Parameter Table			A	B	C
Injection Unit	Screw Diameter	mm	70	75	80
	Screw L/D Ratio	L/D	21.4	20	18.8
	Injection Capacity (Theoretical)	cm <sup>3</sup>	1423	1634	1859
	Injection Weight (Ps)	g	1295	1487	1692
	Injection Pressure	MPa	199	173	152
	Injection Rate	g/s	366	395	446
	Plasticizing Capacity	g/s	60	65	70
	Screw Speed	rpm	160		
Clamping Unit	Clamp Force	KN	4060		
	Open Stroke	mm	700		
	Max. Mould Height	mm	800		
	Min. Mould Height	mm	280		
	Space Between Tie-Bars (W × H)	mm	720 × 720		
	Ejector Force	KN	110		
	Ejector Stroke	KN	160		
	Ejector Number	n	13		
Others	Pump Pressure	MPa	16		
	Motor Power	KW	37		
	Heating Power	KW	20.73		

**Ningbo Jiangdong HYSION Machinery Co., Ltd.**

Address: No.36 Yongjiang South Road, Beilun District, Ningbo, Zhejiang, China

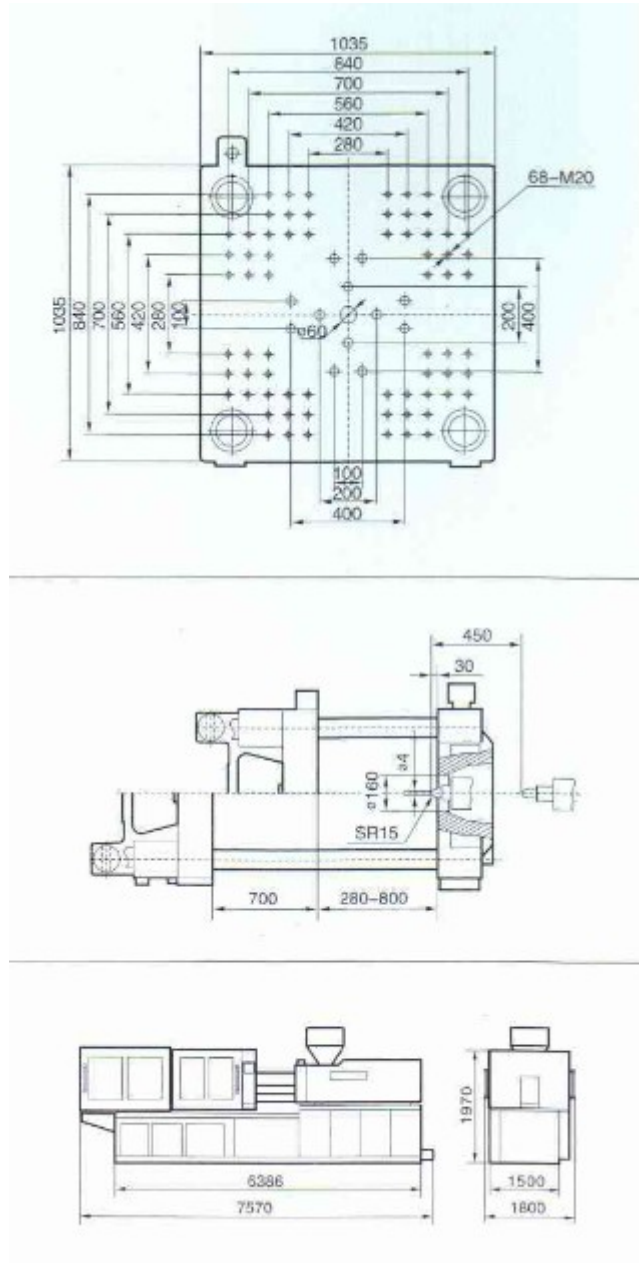
Tel: +86-574-27858986

Fax: +86-574-27858980

E-mail: [haixiongmach@gmail.com](mailto:haixiongmach@gmail.com)     [gewaicun@163.com](mailto:gewaicun@163.com)

	Machine Dimension (L x W x H)	m	7.57 x 1.96 x 2.41
	Machine Weight	t	14.2
	Oil Tank Capacity	L	687

### Mold Plate Dimension



**Ningbo Jiangdong HYSION Machinery Co., Ltd.**

Address: No.36 Yongjiang South Road, Beilun District, Ningbo, Zhejiang, China

Tel: +86-574-27858986

Fax: +86-574-27858980

E-mail: [haixiongmach@gmail.com](mailto:haixiongmach@gmail.com)    [geweicun@163.com](mailto:geweicun@163.com)